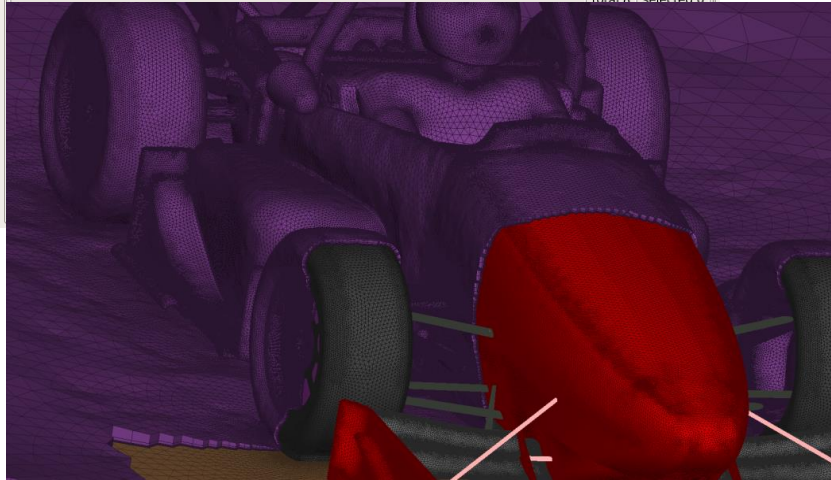
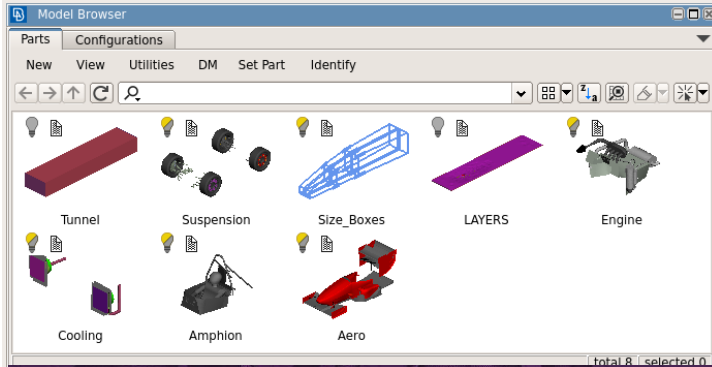
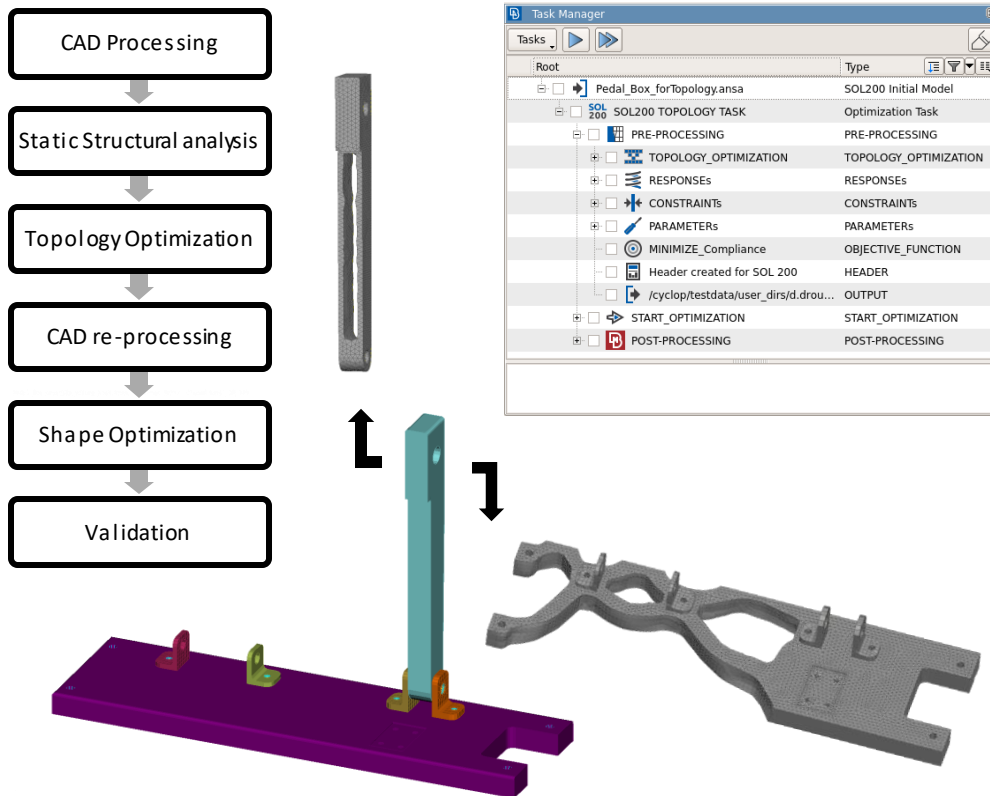


Live Demo 1: ANSA Pre-processing for Flow Simulations of a Formula Student Car



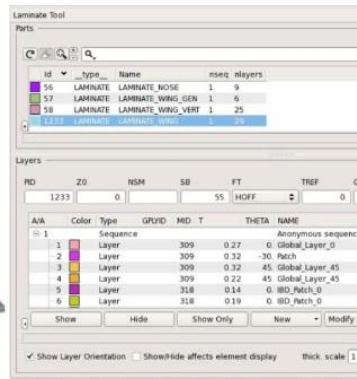
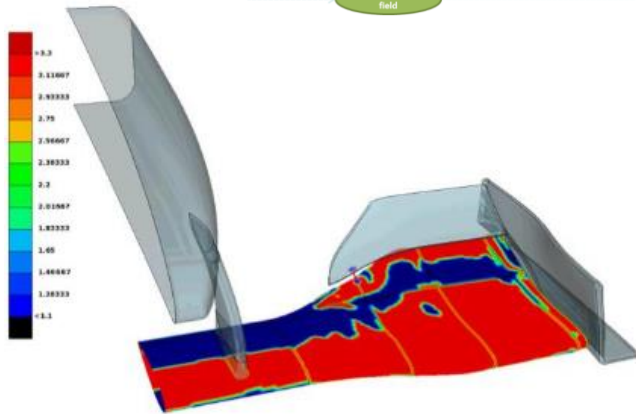
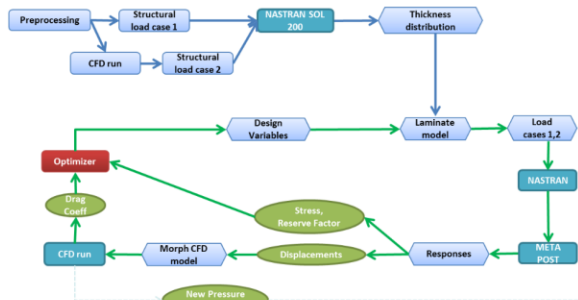
- **Geometry cleanup, defeaturing & watertight model preparation**
- **Model organization**
- **Automatic surface meshing**
 - **Curvature & proximity refinement**
 - **Size boxes**
- **Batch Mesh**
- **Layers generation**
- **Volume meshing algorithms**
- **Quality criteria and mesh improvement**

Live Demo 2: Part 1: ANSA Pre-processing & META Post-processing for Topology Optimization of an FSAE PedalBox assembly



- Model refinement, global geometry checks
- Batch meshing, shell mesh treatment, automatic volume mesh generation
- Assembly handling via the automated Connection Manager
- Topology Optimization via the GUI shaped optimization problem within the Task Manager
- Post-processing via the innovative user toolbars for optimization cases

Live Demo 2: Part 2: ANSA's Laminate Tool functionality for Topometry-Composite Optimization of a F1 Front Wing



- CFD results mapping as input for a structural analysis
- Topometry optimization of the isotropic airfoil
- Laminate tool's functionality for direct layer handling
- Composite Optimization for optimal ply thickness & orientation
- Post processing: animated visualization of layer & thickness distribution during each step, CompositePost toolbar